

# LED MADA®

Uždaroji akcinė bendrovė

Įmonės kodas 303287697, PVM mokėtojo kodas LT100008526416

Kalvarijų g. 125 korp. 3, LT-08221 Vilnius, Lietuva

Tel. +370-680-90900, +370-653-88885

el. p. ledmada@gmail.com, web: www.ledmada.lt

Šąskaita LT947300010138949797, bankas „Swedbank“ AB, Vilnius SWIFT: HABA LT 22

## MODEL SQUARED-2 100W



Power	Luminous Flux	CCT	CRI	Beam Angle	Net Weight
100W	>12000lm	2700~6500K	>65	60°/90°	6.5kg
Size	400*312*98mm				

### Operation and Storage Condition

- Operation Ambient Temperature -30 to +50°C, Relative Humidity 20~90%
- Input Voltage 100~240V AC, 50/60Hz
- Storage Ambient Temperature -30 to +65°C, Relative Humidity 5~95%
- Mounting Height: Suitable for 5~15m height

### Package:

- Carton Size: 400X370X140 MM
- Net weight:6.5KG Gross weight:6.8KG

## FEATURES

- Using Philips led chip to ensure high lumen and long life.
- The shell with the anodic oxidation treatment, strong corrosion resistance.
- Adoption exclusive Lens with light transmittance up to 98%.
- Perfect Light Distribution Solution: Adoption of integrated shell optic lens, enhance the brightness and illumination uniformity.
- There are 60°, 90° beam angle options for the Lens.
- Scientifically-designed heat dissipater with much better cooling effect.
- High luminous efficiency, Whole lamp output light efficiency >120LM/W.
- High quality power supply, input voltage 100-240V. The power efficiency is more than 90%, power factor greater than 0.98, UL compulsory certification.
- For the traditional light source such as the High-Pressure Sodium, if the voltage fluctuation  $\pm 7\%$ , the brightness and lifetime will be reduced very fast, but for LED light, even the voltage fluctuation is  $\pm 20\%$ , the brightness and lifetime will not be influenced at all; Over Current, Over Voltage, Over Heat, Thunder Protection.
- Impact Resistance, Shock-proof, Without Ultraviolet (UV) and Infrared (IR) Radiation: No filament and glass frames, avoid break of the traditional lamp, without harm to the human body.
- The CCT of Warm white, Neutral white, Pure white to meet the needs of different occasions, eliminated the low color temperature of the sodium lamp which cause the depressed mood, observers will feel more comfortable.

# LED MADA®

Uždaroji akcinė bendrovė

Įmonės kodas 303287697, PVM mokėtojo kodas LT100008526416

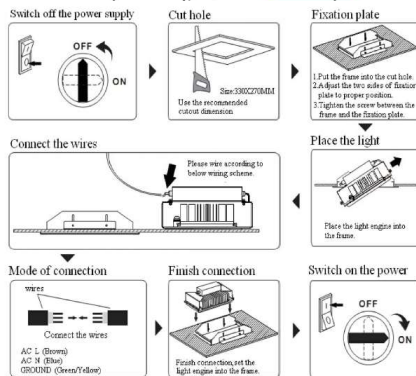
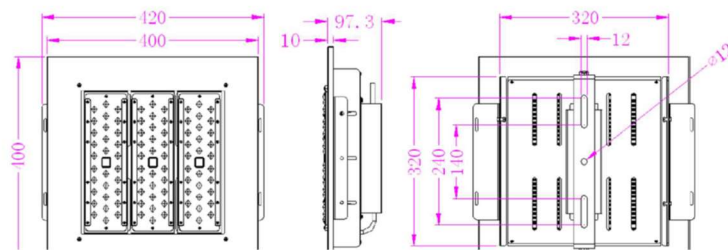
Kalvarijų g. 125 korp. 3, LT-08221 Vilnius, Lietuva

Tel. +370-680-90900, +370-653-88885

el. p. ledmada@gmail.com, web: www.ledmada.lt

Sąskaita LT947300010138949797, bankas „Swedbank“ AB, Vilnius SWIFT: HABA LT 22

## MODEL SQUARED-3 150W



Power	Luminous Flux	CCT	CRI	Beam Angle	Net Weight
150W	>24000lm	WW:2700-3200 K NW:4000-4500 K PW:5000-6500K	>75	60°/90°	6.2kg
Input Current	Power Factor	Type of Chips	Driver Brand	Product Size	Package Size
0.72A/220V AC 1.44A/110V AC	0.95	CREE J series 5050/ LUMILEDS LUXEON 5050	MEAN WELL	400*400*98mm	420X415X165mm

### Operation and Storage Condition

- Operation Ambient Temperature -40 to +50°C, Relative Humidity 20~90%
- Input Voltage 100~240V AC, 50/60Hz
- Storage Ambient Temperature -40 to +65°C, Relative Humidity 5~95%
- Mounting Height: Suitable for 6~15m height

# LED MADA®

Uždaroji akcinė bendrovė

Įmonės kodas 303287697, PVM mokėtojo kodas LT100008526416

Kalvarijų g. 125 korp. 3, LT-08221 Vilnius, Lietuva

Tel. +370-680-90900, +370-653-88885

el. p. ledmada@gmail.com, web: www.ledmada.lt

Sąskaita LT947300010138949797, bankas „Swedbank“ AB, Vilnius SWIFT: HABA LT 22

## Assembly and Installation

### ·Assembly-Electricity

Ø Blue: Neutral

Ø Brown: Line

Ø Yellow-Green: Ground

### Package

Inner box Size: 420mm×415mm×165mm

Outer box Size: 430mm×430mm×350mm

## FEATURES

- Using Philips led chip to ensure high lumen and long life.
- The shell with the anodic oxidation treatment, strong corrosion resistance.
- Adoption exclusive Lens with light transmittance up to 98%.
- Perfect Light Distribution Solution: Adoption of integrated shell optic lens, enhance the brightness and illumination uniformity.
- There are 60°, 90° beam angle options for the Lens.
- Scientifically-designed heat dissipater with much better cooling effect.
- High luminous efficiency. Whole lamp output light efficiency >120LM/W.
- High quality power supply, input voltage 100-240V. The power efficiency is more than 90%, power factor greater than 0.98, UL compulsory certification.
- For the traditional light source such as the High Pressure Sodium, if the voltage fluctuation  $\pm 7\%$ , the brightness and lifetime will be reduced very fast, but for LED light, even the voltage fluctuation is  $\pm 20\%$ , the brightness and lifetime will not be influenced at all; Over Current, Over Voltage, Over Heat, Thunder Protection.
- Impact Resistance, Shock-proof, Without Ultraviolet (UV) and Infrared (IR) Radiation: No filament and glass frames, avoid break of the traditional lamp, without harm to the human body.
- The CCT of Warm white, Neutral white, Pure white to meet the needs of different occasions, eliminated the low color temperature of the sodium lamp which cause the depressed mood, observers will feel more comfortable