

Measurements

Bx1	Max	50,2 °C
	Min	23,8 °C
	Average	31,5 °C
	Area	0,543 m ²
Sp1		48,1 °C

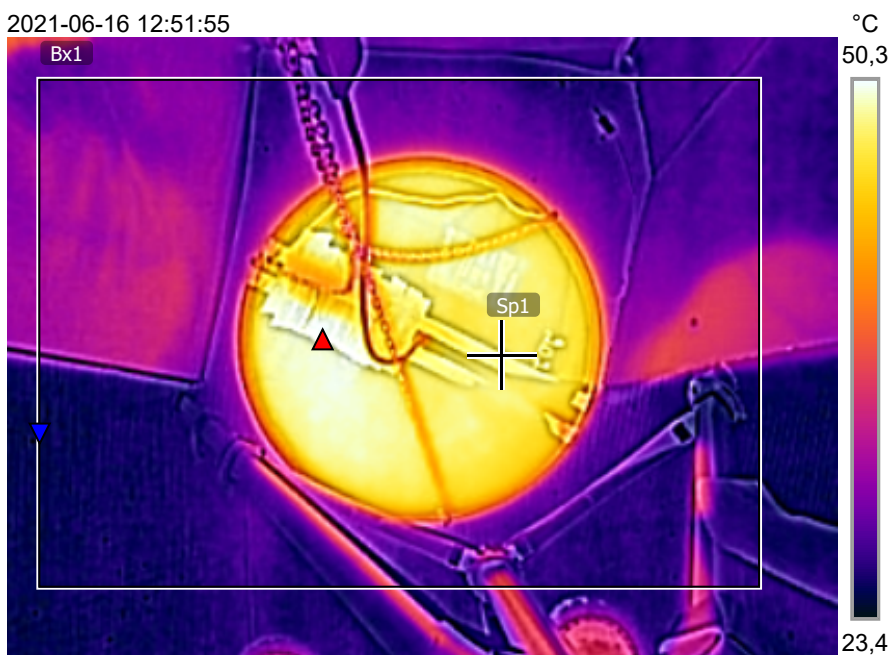
Parameters

Emissivity	0.95
Refl. temp.	20 °C
Distance	1 m
Atmospheric temp.	20 °C
Ext. optics temp.	20 °C
Ext. optics trans.	1
Relative humidity	50 %

Note

2021 3a

2021-06-16 12:51:55

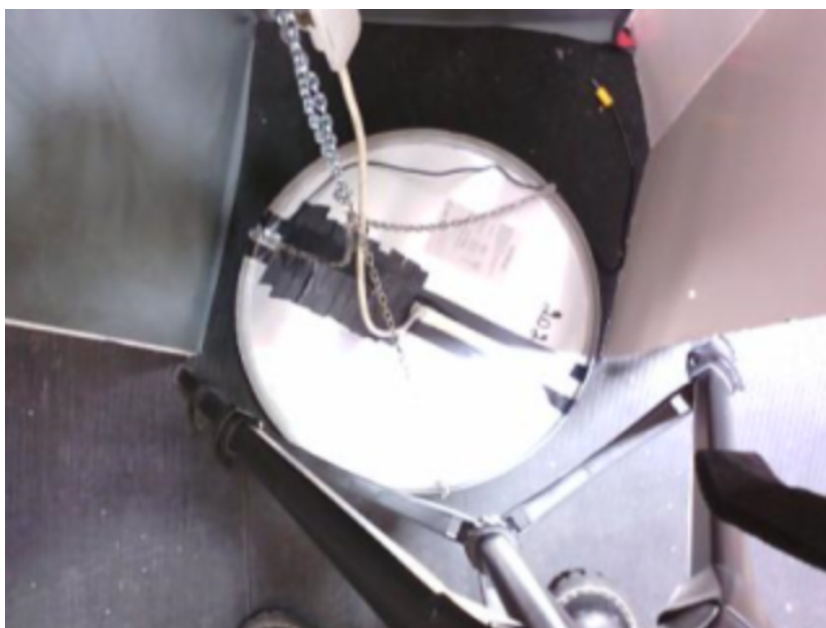


FLIR0041 (1).jpg

FLIR C5

894009268

2021-06-16 12:51:55



FLIR0041 (1).jpg

FLIR C5

894009268