

Measurements

Bx1	Max	43,4 °C
	Min	19,7 °C
	Average	26,1 °C
	Area	0,543 m <sup>2</sup>
Sp1		42,2 °C

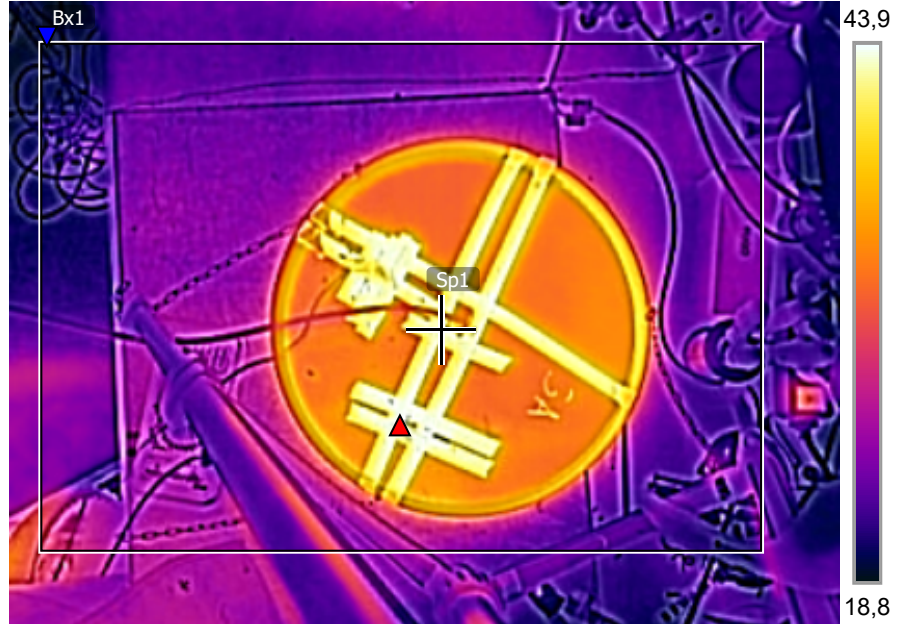
Parameters

Emissivity	0.95
Ref. temp.	20 °C

Note

Cree 3A

2021-06-01 12:00:57

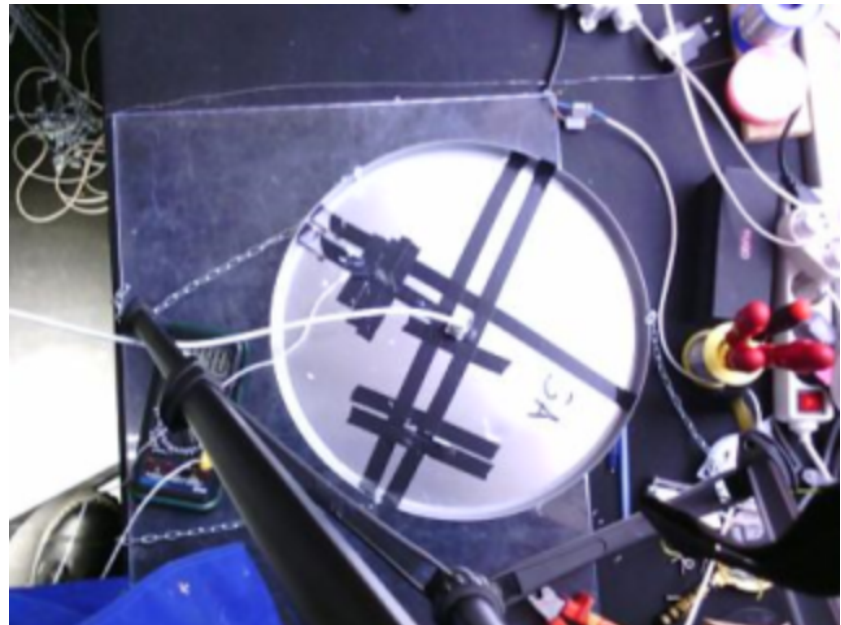


FLIR0038.jpg

FLIR C5

894009268

2021-06-01 12:00:57



FLIR0038.jpg

FLIR C5

894009268